



TACTICAL BREACHING

SAN Ltd is a world leader of electro-hydraulic tactical breaching gear, offering a lightweight, portable, and multi-functional solution that can be operated by one individual and break into any structure at top speed.

As our solution was created FOR Breachers BY Breachers, we know from our broad operational experience that SAN's tactical breaching gear offers a major upgrade for the Police & HLS units, Firefighters & Rescue & First Responders teams, Military & Special Forces.

We further support our valued tactical operator's community through breaching courses and training aids to optimize their capabilities and achieve our central mission:

Save Lives - Enforce Security.





TABLE OF CONTENTS

🕒 **Message from CEO** 03

🕒 **Tactical Breaching Tools** 04-25

Fueled by our signature power unit, our lightweight hydraulic tactical breaching tools, arranged in a kit, are designed and operationally tested to meet all urban forced entry requirements of the Police & HLS units, Firefighters & Rescue teams, Military & Special Forces.

🕒 Power Unit	04-05
🕒 Door Breaker	06-07
🕒 Nordic Door Breaker	08-09
🕒 Mini Door Breaker	10-11
🕒 Cutter	12-13
🕒 Guillotine Cutter	14-15
🕒 Spreader	16-17
🕒 Long Spreader	18-19
🕒 Cylinder Opener	20-21
🕒 Supporting Tools	22-25

🕒 **Breacher's Carriers** 25-35

For an optimal use of our breaching systems, SAN Ltd invests a lot of efforts and resources in designing breacher's carriers that perfectly fit each end user according to their operational requirements.

🕒 Tactical Kit	26-27
🕒 Special Ops Kit	28-29
🕒 Fusion Kit	30-31
🕒 Premium Kit	32-33
🕒 Manual Kit	34-35

🕒 **Training Courses** 35-39

Our Ex Special Forces instructors are well known in their broad operational experience which enables them to adapt to any terrain and breach into any structure. SAN developed training courses that will help our tactical operator's community to be ready upon any call.

🕒 Basic Training Course	36-37
🕒 Advanced Training Course	38-39

🕒 **Training Aids** 40-45

SAN developed reusable training facilities for our tactical operators to utilize all the capabilities of our breaching gear and be ready for any potential scenario.

🕒 Breachers' Training Door	40-41
🕒 Modular Training Facility	42-43
🕒 Advanced Training Facility	44-45

MESSAGE FROM THE CEO

As a former commander of a special force breaching team in the IDF, the meaning of our motto: "FOR Breachers BY Breachers" is always guiding me and deeply implemented in all aspects of our company's activities.

We are exceptionally proud of the trust our tactical breaching community places in SAN's ability to deliver high-quality electro-hydraulic tactical breaching equipment that helps to "Save Lives and Enforce Security", in addition to seeing us as a subject matter expert for the hydraulic breaching field. As a company based on active operators, we believe in providing solutions that are backed by pure professionalism and rapid support service, in order to maintain the operational pace of our unique customers.

Being the leader in our industry and the biggest supplier in the electro-hydraulic tactical breaching sector for the IDF (Israel Defense Forces) SOF community, our systems are also deployed within elite units across North and Latin America, Europe, Asia, Australia, and Africa, hence SAN's efforts will continue to focus on developing efficient breaching technologies. We have many promising new technologies and products in our research and development pipeline and SAN will continue to pursue operational feedback from the field to constantly improve and support our tactical operator's community.

Thank you for your trust. Stay safe.



Ran Nakash
CEO, SAN Ltd

POWER UNIT



Our signature electro-hydraulic power unit combines innovative technology based on lightweight materials, which enables the tactical operator a fast response, mobility, and versatility. Capable of generating over 500 bars of hydraulic pressure, SAN's power unit has the raw power to break through almost any element in the urban environment. We offer a diverse array of easily and quickly attachable hydraulic tools to harness the power of our electro-hydraulic power unit, allowing tactical operators to adjust to the verity and unique conditions of their missions while performing their tasks efficiently and effectively.

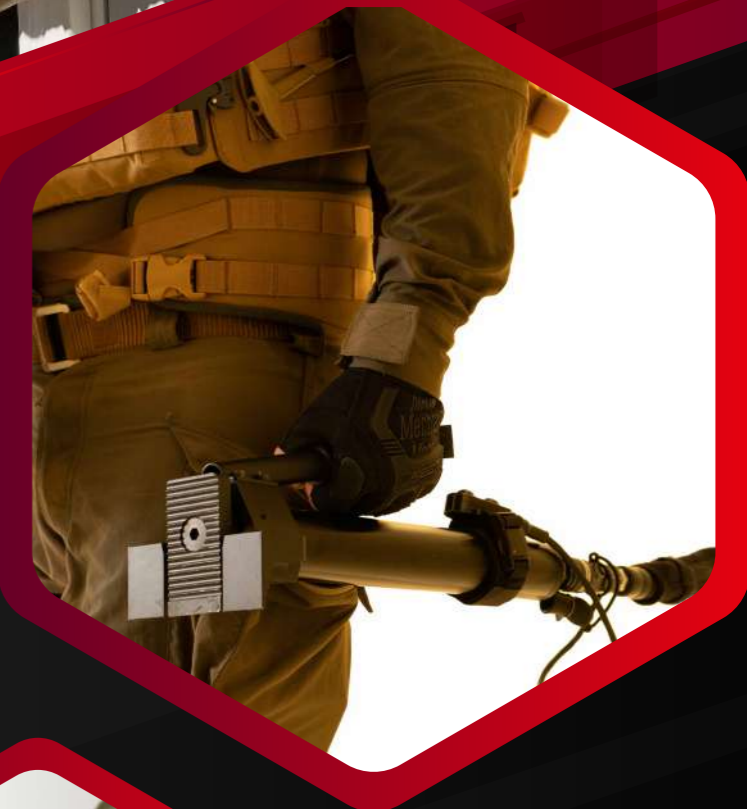
CATALOG NUMBER	EHPU
POWER UNIT WEIGHT	5.66 KG
SYSTEM WEIGHT INCLUDING 1.5M HOSE CONTROL BOX, 2 BATTERIES AND BACKPACK	LESS THAN 10 KG
DIMENSIONS L/H/W	322/155/116 MM
OIL VOLUME	~1.2 LITER
PRESSURE SUPPLY	500 BAR

DOOR BREAKER

SAN

SAN's innovative, light, and rugged Door Breaker is considered as the main tool for breachers. Designed to open any kind of door in the urban environment as: inward (positive/push), outward (negative/ pull), zero gap, security, ship, shelter, normal & armored car, airplane, train, tank, etc. Its shape and weight give the operator extra strength and stabilization which ensures quick and silent breach. With the door breaker's lengthy stroke breach of standard doors normally requires only a single maneuver.

CATALOG NUMBER	DB26H	DB26A
TYPE	HYBRID (STEEL)	ALUMINUM
WEIGHT	5 KG	4.1 KG
STROKE	260 MM	
W/H	124/145 MM	
TEETH LENGTH	23 MM	
LIFTING FORCE	6.4 TON	



NORDIC DOOR BREAKER



SAN's patented new door breaching tool was specifically designed to enable upgraded breaching capabilities when encountering outward security doors. It also allows high efficiency in breaching all elements indicated with our door breaker. The tool's angled edge and lengthy teeth (55mm) contribute to the breaching operation as it simulates the work of the breacher's jimmy (pry) bar. Its patented design was specifically created FOR Breachers BY Breachers due to specific requirements from our tactical operators' community.

CATALOG NUMBER	DB26N
WEIGHT	6 KG
STROKE	260 MM
W/H	130/154 MM
TEETH LENGTH	51 MM
LIFTING FORCE	6.4 TON
ADDITIONAL INFORMATION	PATENT-PROTECTED, CURVED TEETH



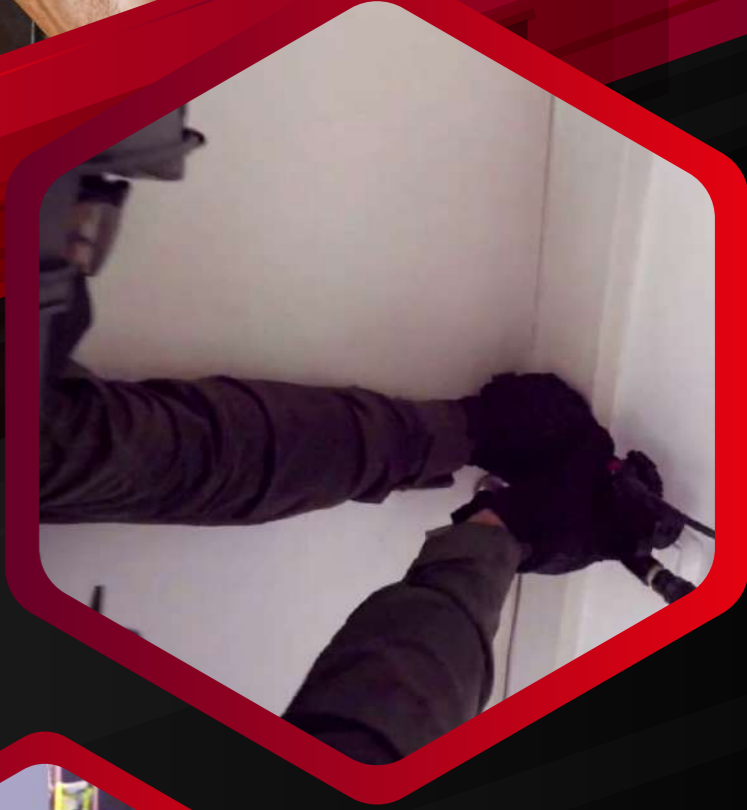


MINI DOOR BREAKER



SAN's lightweight mini door breaker was specifically designed for undercover operations. It comes in three different sizes and can be used on different doors and elements to enable a quick and powerful reaction while having a low footprint.

CATALOG NUMBER	CDB23S	CDB18S	CDB13S
WEIGHT	3.32 KG	2.92 KG	2.52 KG
LENGTH CLOSED	340 MM	290 MM	235 MM
LENGTH OPENED	570 MM	460 MM	360 MM
STROKE	232MM	177MM	127MM
W/H	70/105 MM		
TEETH LENGTH	30 MM		
LIFTING FORCE	3.3 TON		





CUTTER



SAN's "jaws of life" is a tactical hydraulic Cutter that can cut through any bar, hinge, chain, and lock with a cutting force of 22.4 tons. At the blades' junction, tactical operators can cut through elements with diameter up to 18mm. Thanks to its innovative design the element can be cut without any risk of slipping during the operation and the Cutter enables the operator high accuracy and safety capabilities.

CATALOG NUMBER	CU18
WEIGHT	4.5 KG
DIMENSIONS L/H/W	280/56/192 MM
CUTTING CAPACITY - TREATED STEEL	16 MM
CUTTING CAPACITY - UNTREATED STEEL	18 MM



GUILLOTINE CUTTER



SAN's Guillotine Cutter was customized to assist rescue, firefighters, and first responders in their life-saving missions. Well fitted to cut construction bars, big chains, and locks with a cutting force of 15.8 tons and cutting capacity of 26*35 mm, the Guillotine Cutter is suitable for a variety of applications, ranging from forcible entry to the extrication of trapped persons.

CATALOG NUMBER	GC25
WEIGHT	5.9 KG
DIMENSIONS L/H/W	80/395/116 MM
CUTTING CAPACITY - TREATED STEEL	26 MM
CUTTING CAPACITY - UNTREATED STEEL	26*35 MM
CUTTING FORCE	15.8 TON





SPREADER



SAN's tactical spreader is designed to create a 82mm gap and spread between bars, hinges, car doors, and make the necessary space for the tactical operator to work. Our hydraulic Spreader has quiet operation and easy deployment while providing 6.4 tons of force, enabling to a high spreading distance compared to its size and weight, helping the operators to perform heavy-duty work.

CATALOG NUMBER	SP82
WEIGHT	4.2 KG
DIMENSIONS L/H/W	315/76/112 MM
CYLINDER PRESSURE CAPACITY	6.4 TON





LONG SPREADER



SAN's hydraulic Long Spreader was customized to assist rescue, firefighters, and first responders in their life-saving missions especially for trapped people in car accidents. It is designed to spread 128mm between bars, hinges, car doors, and make the necessary space for the tactical operator to work with an additional 46 mm of stroke compared to our normal spreader.

CATALOG NUMBER

SPL123

WEIGHT

5.7 KG

DIMENSIONS L/H/W

420/76/112 MM

CYLINDER PRESSURE CAPACITY

6.4 TON





CYLINDER OPENER



SAN's Cylinder Opener is a compact manual hydraulic tool that enables the tactical operator a variety of capabilities, from carrying concealed tools to breaching light doors. It is a lightweight yet powerful tool with a stroke of 54mm while providing 2.5 tons of force.

CATALOG NUMBER	CO54
WEIGHT	2.6 KG
DIMENSIONS H/W	38/70 MM
CYLINDER PRESSURE CAPACITY	2.5 TON





SUPPORTING



WIRE CUTTER

WEIGHT

0.7 KG



TOOLS



MAGNET

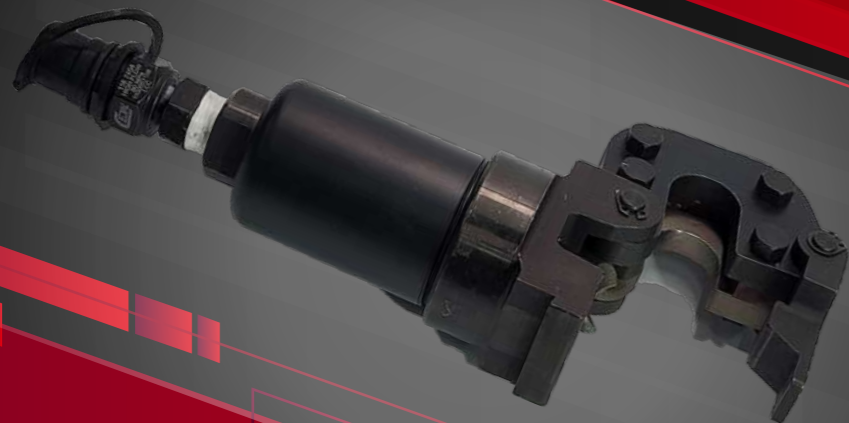
WEIGHT

0.54 KG





SUPPORTING



CABLE CUTTER

WEIGHT	3.2 KG
CUTTING FORCE	4 TON
CUTTING CAPABILITY	19 MM



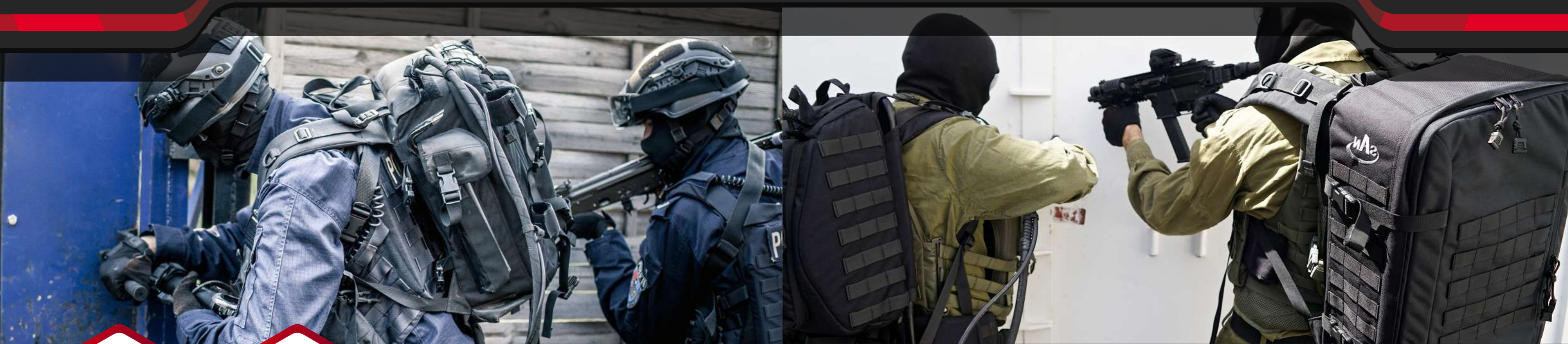
TOOLS



JIMMY BAR

WEIGHT	0.23 - 2.3 KG
LENGTH	267 - 700 MM
TYPE	STEEL, TITANIUM





	TACTICAL BACKPACK	TOOLS BACKPACK
CATALOG NUMBER	TAB (B/R)	TOB (B/R/G)
DIMENSIONS L/H/W	480*310*230	530*340*230
WEIGHT (EMPTY)	12 KG	14.8 KG
CONTAINS	Tactical Backpack + Electro-Hydraulic Power Unit + Control Box + 2 Batteries + Charger + Hose + Remote Control	Tools' Backpack + Aluminum/Hybrid Door Breaker + Cutter + Spreader + Jimmy Bar
ADDITIONAL SPECIFICATIONS	Possibility to carry 3 tools (Door Breaker, Cutter, Spreader)	Possibility to carry 3 tools (Door Breaker, Cutter, Spreader)





SPECIAL OPS KIT

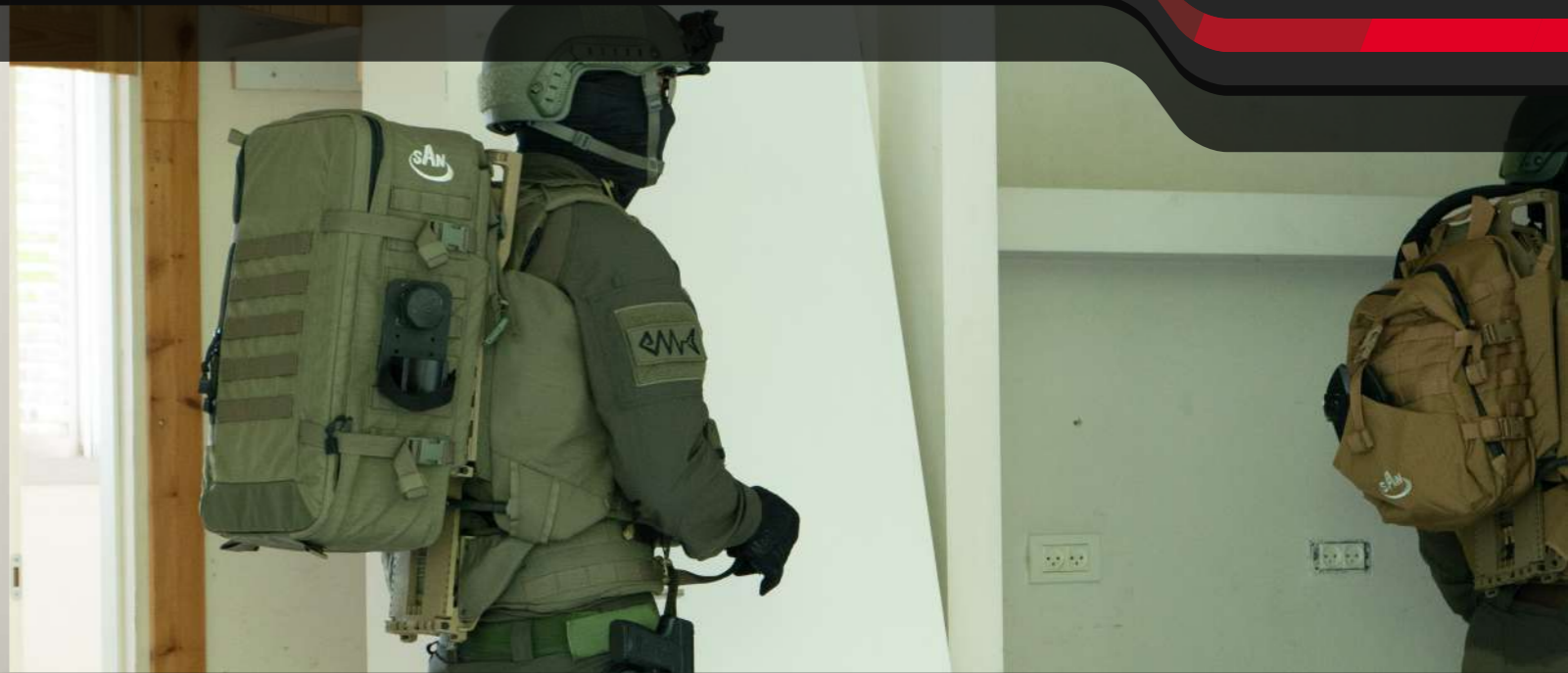


CATALOG NUMBER	SO01 (G/B)
DIMENSIONS L/H/W	430*290*150
WEIGHT (EMPTY)	10.9 KG
CONTAINS	Special Ops Backpack* + Electro-Hydraulic Power Unit + Control Box + 1 Battery + Charger + Hose + Remote Control + Aluminum/ Hybrid Door Breaker + Cutter + Jimmy Bar + Magnet
ADDITIONAL SPECIFICATIONS	Possibility to carry Cutter Door Breaker is carried by Magnet * Can be upgraded to Micro-Fusion Carrier





FUSION KIT



	TACTICAL FUSION BACKPACK	TOOLS BACKPACK
CATALOG NUMBER	FU01 (C/G/B)	TOB (B/R/G)
DIMENSIONS L/H/W	530*320*220	530*340*230
WEIGHT (EMPTY)	14.6 KG	14.8 KG
CONTAINS	Tactical FUSION Backpack + Electro-Hydraulic Power Unit + Control Box + 2 Batteries + Charger + Hose + Remote Control FUSION System – Vest + Belt + Back System	Tools' Backpack* + Aluminum/Hybrid Door Breaker + Cutter + Spreaders + Jimmy bar
ADDITIONAL SPECIFICATIONS	Possibility to carry 3 tools (Door Breaker, Cutter, Spreader)	Possibility to carry 3 tools (Door Breaker, Cutter, Spreader) * Can be upgraded to FUSION system



PREMIUM KIT



CATALOG NUMBER	PRB01 (B/G)
DIMENSIONS L/H/W	430*290*150
WEIGHT (EMPTY)	10.9 KG
CONTAINS	Micro Fusion + Special Ops Backpack + Electro-Hydraulic Power Unit + Advanced Control Box (MIL) + 2 Batteries (MIL) + Charger (MIL) + Hose + Advanced Remote Control + Nordic Door Breaker + Magnet + Titanium Jimmy Bar
ADDITIONAL SPECIFICATIONS	Possibility to carry Cutter Door Breaker is carried by Magnet



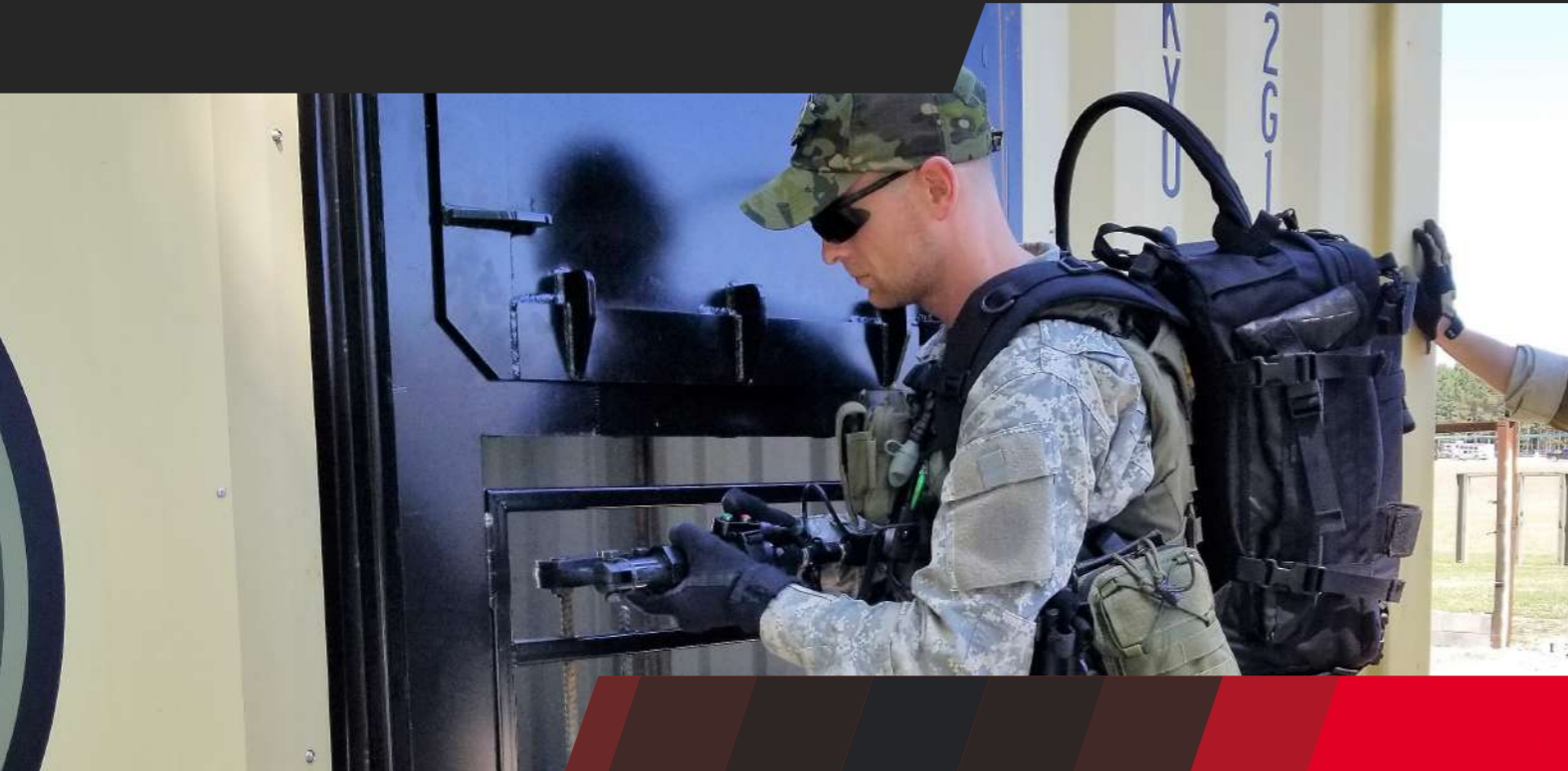


MANUAL KIT



	MANUAL BACKPACK	TOOLS BACKPACK
CATALOG NUMBER	MPFH02 (R/B)	TOB (B/R/G)
DIMENSIONS L/H/W	590*240*220	530*340*230
WEIGHT (EMPTY)	9 KG	14.8 KG
CONTAINS	Case + Manual Power Unit + Hose	Tools' Backpack + Aluminum/Hybrid Door Breaker + Cutter + Spreader + Jimmy Bar
ADDITIONAL SPECIFICATIONS		Possibility to carry 3 tools (Door Breaker, Cutter, Spreader)

BASIC TRAINING COURSE



BASIC TRAINING COURSE (3 DAYS)

The basic breaching course on the SAN's system focuses on delivering knowledge to tactical operators regarding the system's operation, preventive maintenance, and basic troubleshooting at the operational level.

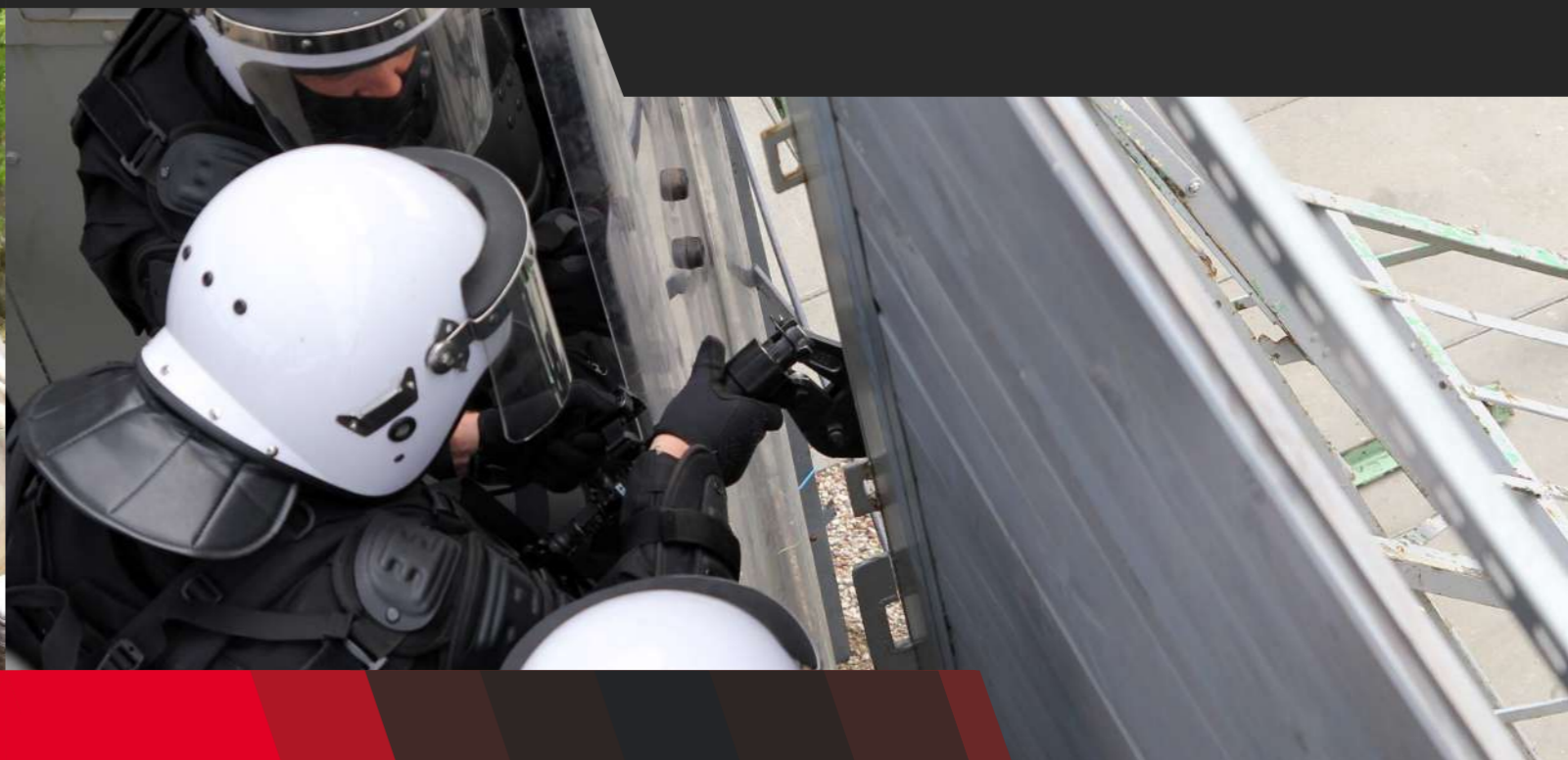
MAIN OBJECTIVES:

- ✔ Basic Background.
- ✔ Basic Introduction of SAN's Tactical Breaching Tools.
- ✔ Basic Operation and Doctrine.
- ✔ Basic Maintenance

"1 INSTRUCTOR FOR UP TO 8 CADETS"



ADVANCED TRAINING COURSE



ADVANCED TRAINING COURSE (5 DAYS)

SAN's Advanced Training Course is designed to provide a deeper knowledge about the technical comprehension of the breaching system and utilizes real tactical scenarios to provide an understanding of different breaching methods to overcome a variety of elements which can be found in the urban environment, while also working as a squad.

MAIN OBJECTIVES:

- ✔ Basic Training Course Content.
- ✔ Technical Comprehension of SAN's Tactical Breaching Tools.
- ✔ Real-time Analysis.
- ✔ Squad Breaching.

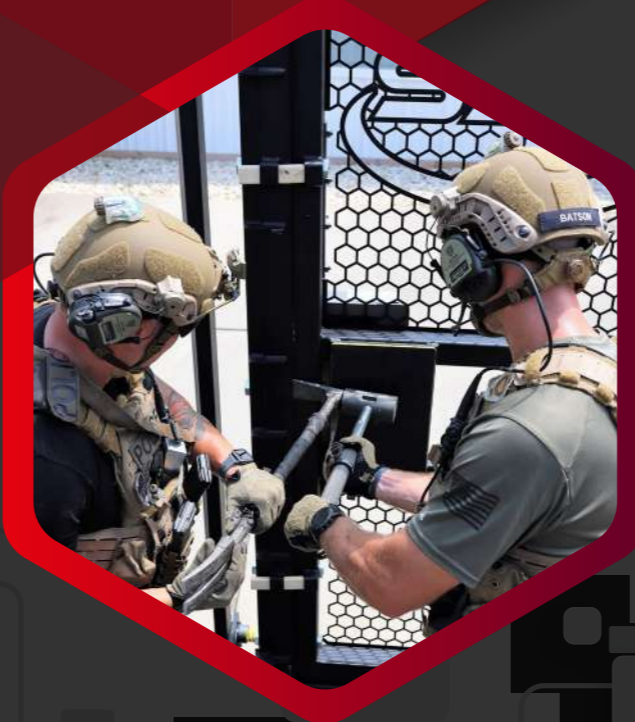




REUSABLE TRAINING DOOR

BREACHERS' TRAINING DOOR

SAN's Breachers' Training door is standalone reusable training element with a patented unique design which enables the tactical operators to train on different elements that exist in the urban environment in various compositions such as: Pull (Outward, Negative), Push (Inward, Positive), Zero Gap Doors with different gear such as: Mechanical, Hydraulic and Shotgun. This standalone door is mobile, can be dismantled for transportation and easily installed wherever it is required.





MODULAR TRAINING FACILITY

SAN's Modular Training Facility is a versatile breaching structure with reusable elements that are compacted in size and can be transported and assembled easily.

The basic Modular Training Facility is composed of 4 wings (sides) where each element simulates a different breaching operation, but as SAN works separately with each end-user to make the right adaptation to create the perfect fit, each breaching facility and element can be customized according to the end user's requirements and budget.

THE FOUR BASIC ELEMENTS ARE:

Inward & Outward Flexible Door – Allow the tactical operator to simulate the work on a flexible door in inward(positive/push) and outward(negative/pull) positions, in addition to the possibility to train on the method of 2 breachers when is required.

Multi-Lock / Security Door – Training on the breaching work of inward(positive/push) and outward(negative/pull) doors with the ability to position many locking points in different locations to simulate Multi-Lock / high security class doors.

Zero Gap Window + Grill Bar – This element trains the operator to practice on the method of zero gap breach while breaching a window. In the lower part of the element we have installed a grill bar to train on cutting different type and size of steel bars.

Door Docking Station – This element was designed in order to allow easy and fast installation for almost any kind of door. This allows a vital element for the proper training of the operators to gain the experience of a breach on one-time elements as they are getting the “feel” of a breach of real door which is used in their local market.

MODULAR TRAINING FACILITY





ADVANCED TRAINING FACILITY

ADVANCED TRAINING FACILITY

SAN's 20 ft container is transformed into an advanced breaching training facility in order to prepare units in all possible scenarios. This facility includes 2 doors, zero gap window, a grill bar and a door docking station, which are all reusable. This state-of-the-art facility can be structured from various compositions and can be customized* with additional inward(positive/push) and outward(negative/pull) openings, bars installation, and electronic devices possibilities, while each obstacle in the structure is reusable. The facility can be customized and supplied according to the end user's requirements and budget.

For shipment purposes – breaching elements can be stored inside the container and be installed only once the facility has arrived at its destination by the SAN engineering team. A 40 ft container is also available, which can be customized and supplied according to the client's needs.

THE FOUR BASIC ELEMENTS ARE:

- Ⓢ Inward & Outward Flexible Door
- Ⓢ Multi-Lock / Security Door
- Ⓢ Zero Gap Window + Grill Bar
- Ⓢ Door Docking Station





CONTACT INFORMATION

+972-52-8752781, +972-4-605-6600

Info@SANTactical.com

www.SANTactical.com

Nahal Havushit St 3, Qiryat Shemona, Israel

